

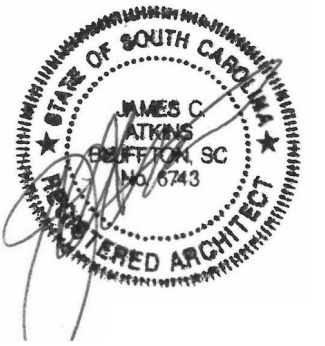
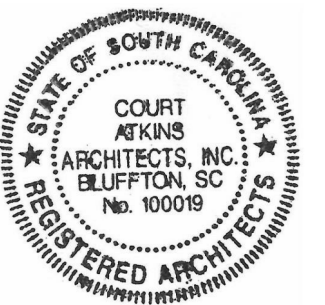


COURT
ATKINS
GROUP

POST OFFICE BOX 3978
BLUFFTON, SC 29910
PH: 843.815.2557
FX: 843.815.2547

WWW.COURTATKINS.COM

Piedmont.Goodwill Myrtle
Beach Retail Store
2754 AGNES LANE
MYRTLE BEACH, SC 29577



© COPYRIGHT 2020 COURT ATKINS GROUP -
THIS DRAWING IS THE PROPERTY OF THE
ARCHITECT AND IS NOT TO BE REPRODUCED IN
WHOLE OR IN PART BY ANY MEANS OR METHOD
WITHOUT THE EXPRESS WRITTEN CONSENT OF THE
ARCHITECT. ANY UNAUTHORIZED
REPRODUCTION OR REUSE OF THESE
DOCUMENTS WILL RESULT IN LEGAL ACTION.

PROJECT INFO

Date
2020.08.27

Project No.
20-027

ISSUE

NO. REV. DATE DESCRIPTION

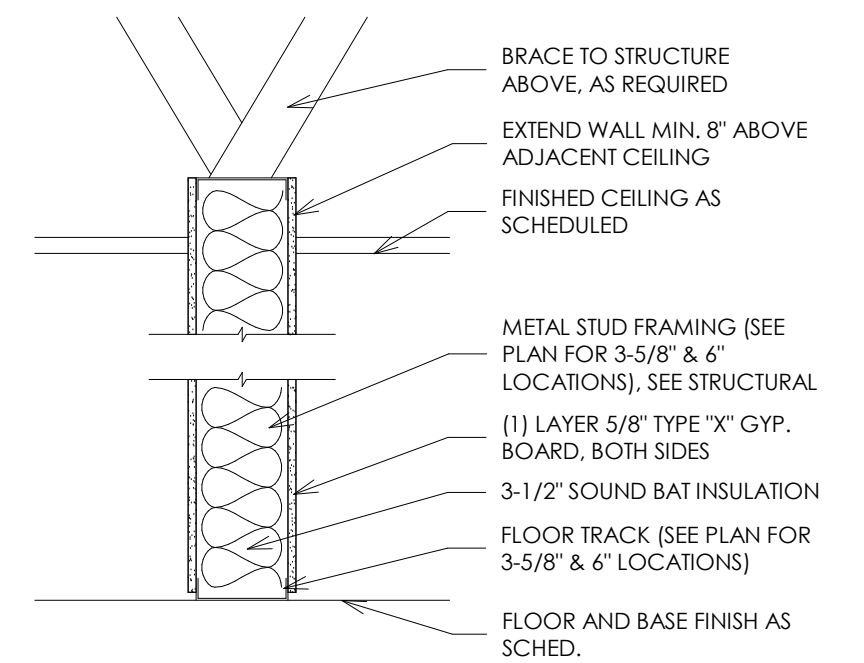
SHEET TITLE

FIRST FLOOR PLAN

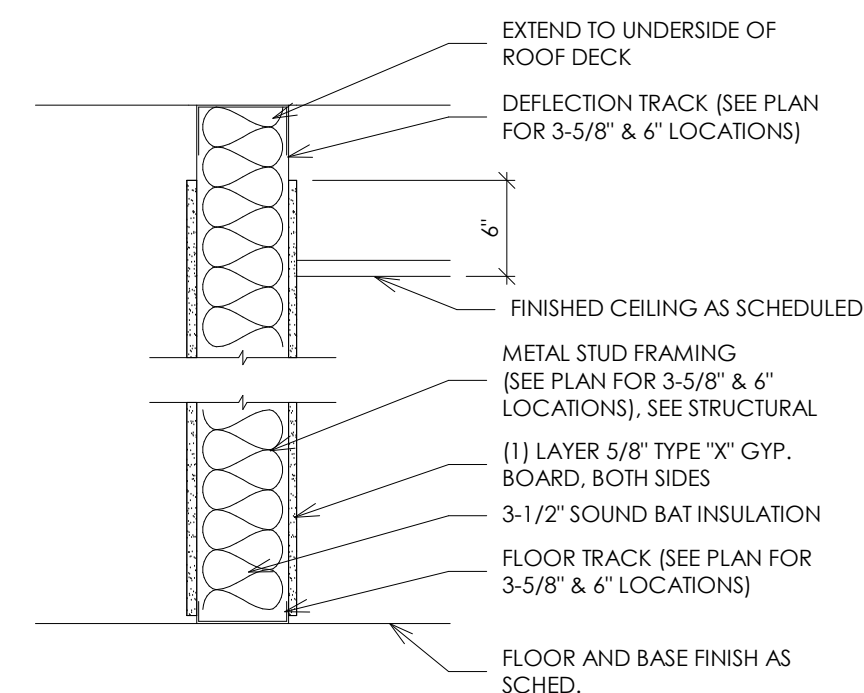
A2.1

FLOOR PLAN - SYMBOL KEY

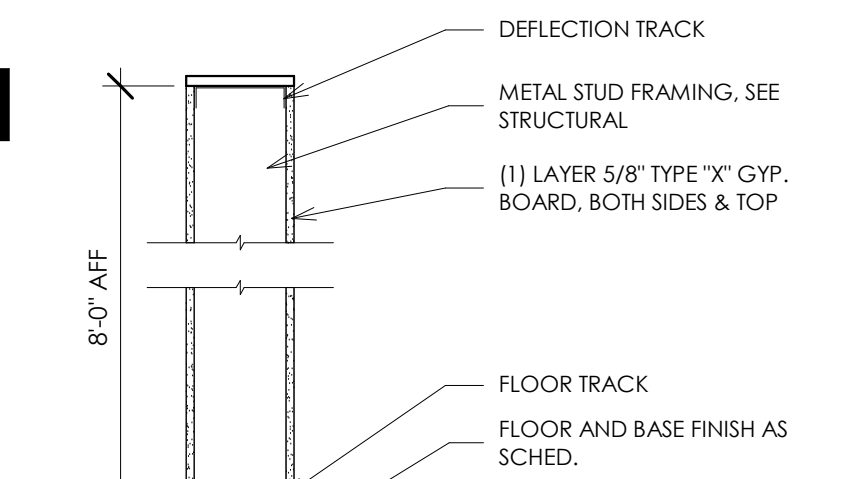
- 3-5/8" METAL STUDS WITH 5/8" TYPE 'X' GYPSUM WALLBOARD
- 6" METAL STUDS WITH 5/8" TYPE 'X' GYPSUM WALLBOARD
- 8" CMU WITH 2" RIGID INSULATION WITH HARDIE LAP SIDING + BRICK VENEER



- A - NOT-RATED SEE FLOOR PLAN FOR 6" LOCATIONS. USE MOISTURE BOARD ON ALL WET WALLS
- A1 - NOT-RATED SEE FLOOR PLAN FOR 3-5/8" LOCATIONS. USE MOISTURE BOARD ON ALL WET WALLS



- B - NOT-RATED SEE FLOOR PLAN FOR 6" LOCATIONS. USE MOISTURE BOARD ON ALL WET WALLS
- B1 - NOT-RATED SEE FLOOR PLAN FOR 3-5/8" LOCATIONS. USE MOISTURE BOARD ON ALL WET WALLS



- C - NOT-RATED SEE FLOOR PLAN FOR 3-5/8" LOCATIONS

GENERAL FLOOR PLAN NOTES:

A. SEE COVER PAGE FOR NOTES AND LIMITATIONS TO ARCHITECTURAL SCOPE OF SERVICES.

B. GENERAL CONTRACTOR NOTE:
ADJUST TOP OF SLAB, WALL, AND ROOF BEARING PLATES AS REQUIRED FOR CHANGES IN STRUCTURAL MEMBER SIZES OR EXISTING SITE CONDITIONS.

GC/OWNER TO COORDINATE ALL IN-SLAB ELECTRICAL AND PLUMBING REQUIREMENTS WITH APPROPRIATE SUBCONTRACTOR TRADES PRIOR TO PLACING SLAB.

C. DIMENSION NOTES:
DIMENSIONS ARE TO THE EDGE OF FOUNDATION AND FRAMING, U.O.N.. DO NOT SCALE DRAWINGS. CONTACT ARCHITECT WITH ANY DISCREPANCIES.

U.N.O. DOORS ARE LOCATED 6" FROM ADJACENT WALL.

D. FRAMING NOTES:
STRUCTURAL ENGINEERING DOCUMENTS SUPERCEDE ARCH. DOCUMENTS AND SCHEDULES WITH REGARD TO SIZE OF STRUCTURAL MEMBERS, PLACEMENT, AND CONNECTION DETAILS.

SEE STRUCTURAL ENGINEERING DRAWINGS FOR FOUNDATION DESIGN AND DETAILING.

E. FINISH NOTES:
FLOOR, WALL, CEILING, AND FINISHES ARE AS NOTED ON FINISH SCHEDULE - SEE SHEET A7.0. GENERAL CONTRACTOR TO ADJUST SLAB, WALLS, AND CEILING TO ACCOMMODATE OWNER SPECIFIC FINISHES AND TRIM.

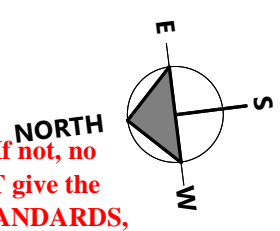
F. ELECTRICAL NOTES:
SEE ELECTRICAL ENGINEERING DOCUMENTS. ALL WIRING AND DEVICES TO BE IN CONCEALED CONDUIT. GC TO COORDINATE CONDUIT.

G. PLUMBING NOTES:
SEE PLUMBING ENGINEERING DOCUMENTS. GC TO COORDINATE FLOOR DRAINS.

H. CIVIL / LANDSCAPE NOTE (N.I.C.):
SEE ENGINEERING DOCUMENTS. GC TO COORDINATE EXTERIOR DOORS WITH WALKWAYS TO MEET IBC 2018 SECTION 1010.1.5.



FIRST FL
A2.1
1/8" = 1'-4"



These plans must be on site at all times. If not, no inspections will be performed. Failure to identify a code violation during this review DOES NOT give the applicant the right to violate the code. The final installation shall be in conformance with all STANDARDS, CODES AND ORDINANCES adopted by the City of Myrtle Beach. Be advised that the work proposed has NOT been reviewed for compliance with the building regulations. Building officials have neither the responsibility nor the authority to enforce the requirements of the 2010 ADA Standard, ADAAG, USAS or PHAG.